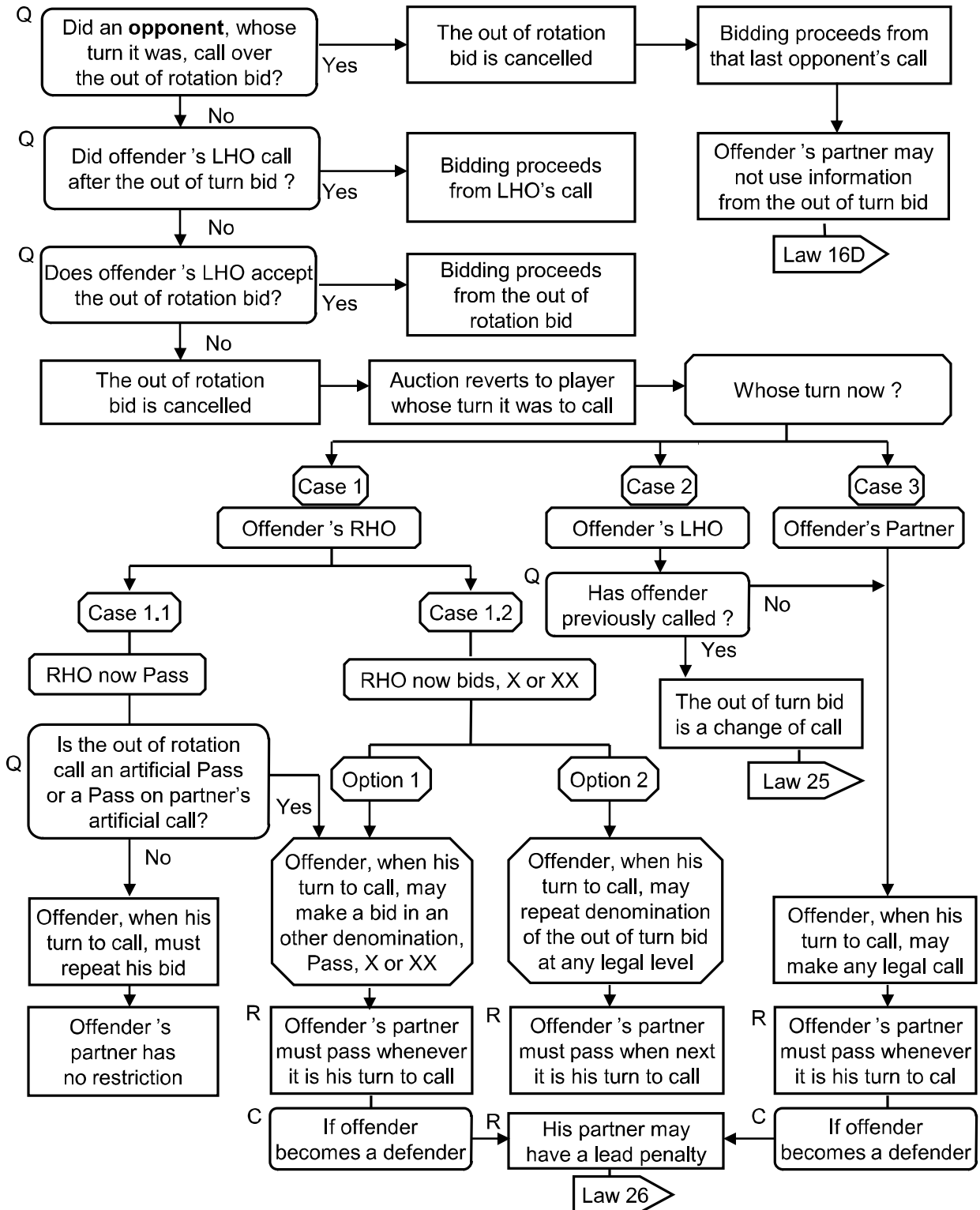


Law 31: Bid Out of Rotation

This Law also applies when a **Pass out of rotation** is artificial or is made after an artificial call of partner.

Pass is artificial if, by agreement, it promises more than a specific strength or it promises or denies values other than in the last suit named.



Law 23 permits the director to adjust the score if the offender could have been aware at the time of his irregularity that partner's mandatory pass could well damage the non-offending side